



Tracey Padayachee  
0782227426  
tracey@compropballito.co.za

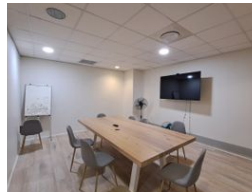
Contact ComProp Ballito

032 9462727

Suite 1 ComProp House Kyalami Park,  
Douglas Crowe Avenue,  
Ballito Business Park,  
4420



Web Ref SI8&9S



R2,900,000

Monthly Levy R4,751 Excl. VAT

Monthly Rates R4,745 Excl. VAT

3 0

### Magnificent P Grade Office on the First Floor

Silverstone Way is an upmarket office complex situated behind the Lifestyle Centre in the Ballito Business Park. Modern state of the art office with loads of natural light.

Recently renovated to include open plan office area, 3 separate offices, Boardroom, Reception area, Workstation counter, Balcony,

### Features

**Zoning** Commercial

#### Interior

Air Conditioning Yes

#### Exterior

Security Yes  
Basement Parkings 3

#### Sizes

Floor Size 200m²

#### Extras

Security Gate Air Conditioner Lifts Intercom

