



Tracey Padayachee
0782227426
tracey@compropballito.co.za



Bruce Mungle
+27 731370304

bruce@compropballito.co.za

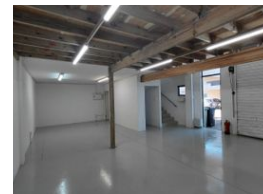
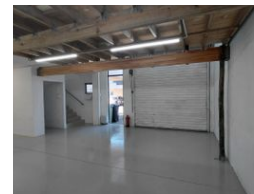
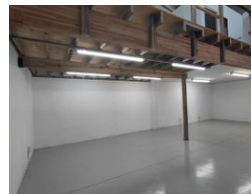
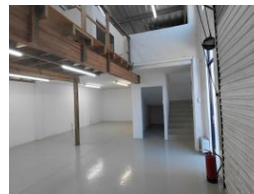
Contact **ComProp Ballito**

032 9462727

Suite 1 ComProp House Kyalami Park,
Douglas Crowe Avenue,
Ballito Business Park,
4420




Web Ref LA34R



R11,220 pm

Gross Monthly Rental R11,220 Excl. VAT

 2  0

Light Industrial Mini Factory

Laguna Seca is a secure, light industrial mini-factory complex situated just 3 km from Ballito's CBD, with easy access to the N2 highway. The units offer double-volume ground-floor warehouse space, a 3m x 3m roller shutter door, an upstairs air-conditioned office, toilet facilities, and two undercover parking bays.

Ideal for a range of light industrial operations, the complex accommodates vehicles up to 8 tons. Access is conveniently located

Features

Zoning Commercial

Interior

Air Conditioning Yes

Exterior

Security Covered Parking Bays Yes 2

Sizes

Floor Size 132m²

Extras

Security Gate

