



Tracey Padayachee
0782227426
tracey@compropballito.co.za

Contact ComProp Ballito

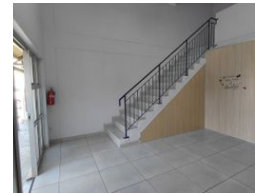
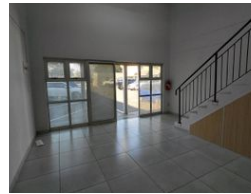
032 9462727

Suite 1 ComProp House Kyalami Park,
Douglas Crowe Avenue,
Ballito Business Park,
4420

125m² Retail To Let in Ballito Central



Web Ref GR7R



R14,000 pm

Gross Monthly Rental R14,000 Excl. VAT

 0  1

Retail / Office unit in the heart of Ballito

This retail or office unit is ideally located in the heart of Ballito's thriving Business Park, just behind the busy Lifestyle Shopping Centre. Gregory Park is a popular mixed-use development that includes retail stores, beauty salons, IT services, and food outlets. The unit enjoys excellent visibility and consistent foot traffic. The space features a modern glass-fronted entrance, a spacious ground-floor showroom, and an upstairs office equipped with air conditioning. It also includes a kitchenette, two toilets, and one

Features

Zoning Commercial

Interior

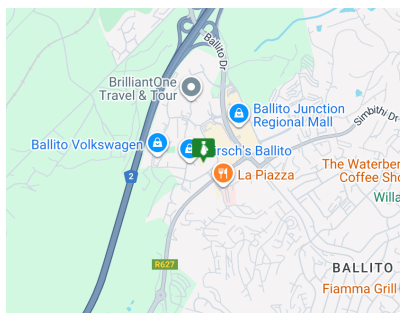
Air Conditioning Yes

Exterior

Open Parking Bays 1

Sizes

Floor Size 125m²



<https://www.compropballito.co.za>