



Bruce Mungle
+27 731370304
bruce@compropballito.co.za



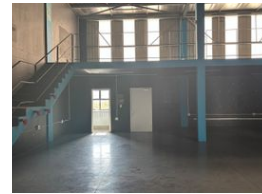
Tracey Padayachee
0782227426

tracey@compropballito.co.za

Contact **ComProp Ballito**

032 9462727

Suite 1 ComProp House Kyalami Park,
Douglas Crowe Avenue,
Ballito Business Park,
4420



R23,210 pm

Gross Monthly Rental R23,210 Excl. VAT

 0  0

Mini Factory at Shakas Head Industrial Park Phase 2

Shaka's Head Industrial Park is a secure light industrial development ideally situated adjacent to North Point Ballito, with excellent connectivity to both the N2 and R102. The park is fully enclosed with security fencing and features a guarded entrance ensuring a safe and controlled working environment.

This unit offers a spacious warehouse with a 4.5m roller shutter door, a mezzanine level that can be used for storage or office space, as well as a kitchenette and toilet facilities. The layout allows for easy delivery access up to double axle trucks. Price

Features

Zoning Commercial

Exterior

Security Yes

Sizes

Floor Size 211m²

Extras

Security Gate

